



NUDURA® ICF HOUSE PLAN: #497-64

SIMPLE FARMHOUSE WITH THOUGHTFUL DETAILS

On-trend curb appeal makes this farmhouse design stand out. Inside, discover two sets of French doors

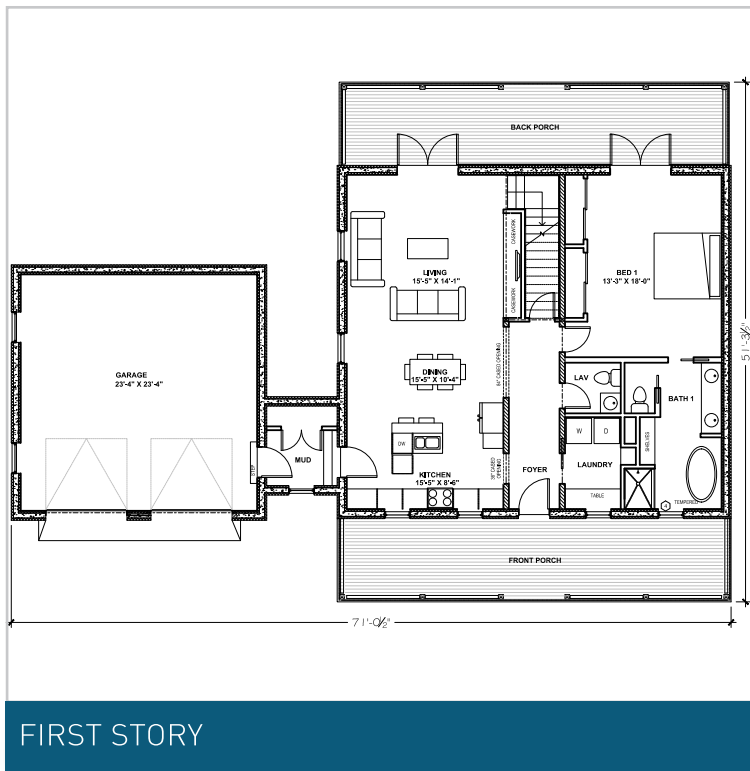
(including one in the main suite) that open to the back porch. Each bedroom upstairs includes a private bathroom.

SQUARE FEET	2068 sq ft
BEDROOMS	3
BATHROOMS	3.5

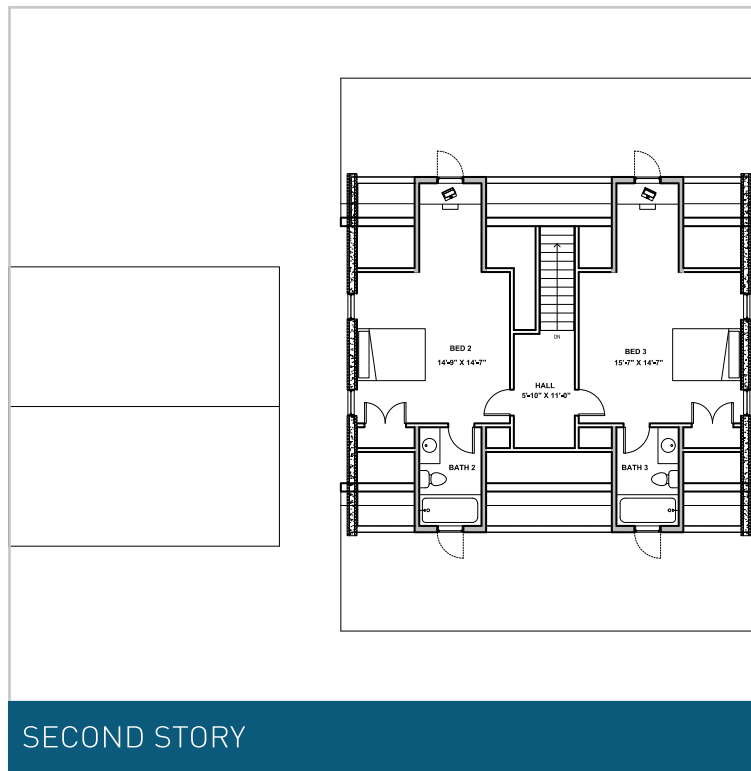
STORIES	2
DIMENSIONS	51'x 76'

The charming front porch of this classic farmhouse adds to the on-trend curb appeal. Inside, a formal foyer leads to the open concept living space on the left. The kitchen flows seamlessly into the dining and living room then out to the rear porch. The French doors provide amazing natural light to the space and add to the relaxed feeling. A cozy mudroom connects the two-car garage with the main house, keeping clutter at bay. Back in the foyer, there is a walk-in laundry room next to the

powder room. The primary suite sits on the main level and features a lovely private bathroom and another set of French doors leading out to the back porch. Upstairs there are two similar guest bedrooms that both have their own bathrooms and cozy reading nooks.



FIRST STORY



SECOND STORY

WHY CHOOSE NUDURA® ICF FOR YOUR INSULATED CONCRETE FORM HOUSE?



ENERGY SAVINGS

Say goodbye to high heating and cooling costs in your new ICF home. Nudura ICFs can help improve energy efficiency by up to 58%* compared to traditional construction. [CLICK HERE](#) to learn more about how the solid mass of the Nudura ICF wall, combined with two continuous panels of EPS foam, help prevent energy loss through the wall.



INDOOR AIR QUALITY

Your new home built with Nudura ICFs will be airtight, enabling mechanical systems to heat, cool and ventilate more efficiently and minimizing the potential formation of mold and draft paths. Nudura ICFs do not support mold growth, nor do they emit CFCs or HCFCs. [CLICK HERE](#) for more information about how Nudura ICFs protect occupants and the environment.



SAFETY

Nudura ICFs provide a fire protection rating of up to 4 Hours – 4 times that of a typical wood frame home. Structures built with Nudura ICFs also can withstand winds up to 250 mph (402 kph) ensuring your family and home are safe and secure in almost any situation. [CLICK HERE](#) to learn more about disaster resilient buildings with insulated concrete forms.



SOUND DAMPENING

Providing a minimum STC (Sound Transmission Class) rating of STC 50**, Nudura ICFs act as an effective sound barrier by dampening sound vibrations from unwanted outside noise. [CLICK HERE](#) to learn more about how Nudura ICFs offer an effective sound proofing solution.

*As proven by third-party testing conducted by CLEB Laboratories and the Insulating Concrete Forms Manufacturers Association (ICFMA).

**STC 50 based on minimum 6" (152 mm) Nudura form concrete core thickness, installed with code compliant finishes mounted both sides of wall assembly in accordance with Nudura ICF installation procedures.



Interested in purchasing this plan?

A full plan set for this home is available for immediate purchase from houseplans.com.

To purchase the plan set for this home, scan the QR code or go to <https://share.hsforms.com/1zyzxc71TUKun-9ANvLkrg2k07m>

3735 Green Road | Beachwood, OH 44122 | 866.468.6299 | nudura.com

Tremco Construction Products Group (CPG) brings together Tremco CPG Inc. and its Dryvit and Nudura brands; Willseal; Prebuck LLC; Tremco Barrier Solutions, Inc.; Weatherproofing Technologies, Inc. and its Pure Air Control Services and Canam Building Envelope Specialists offerings; and Weatherproofings Technologies Canada, Inc.

Use of the ® symbol indicates registration with the US Patent & Trademark Office and the Canadian Intellectual Property Office.
© Tremco CPG Inc. 2023

0323/BMTCS

TREMCO
Construction Products Group

tremcocpg.com