



NUDURA® ICF HOUSE PLAN: #497-67

READY FOR ENTERTAINING

Be prepared for guests to swoon over the wet bar next to the elegant dining room in this spacious

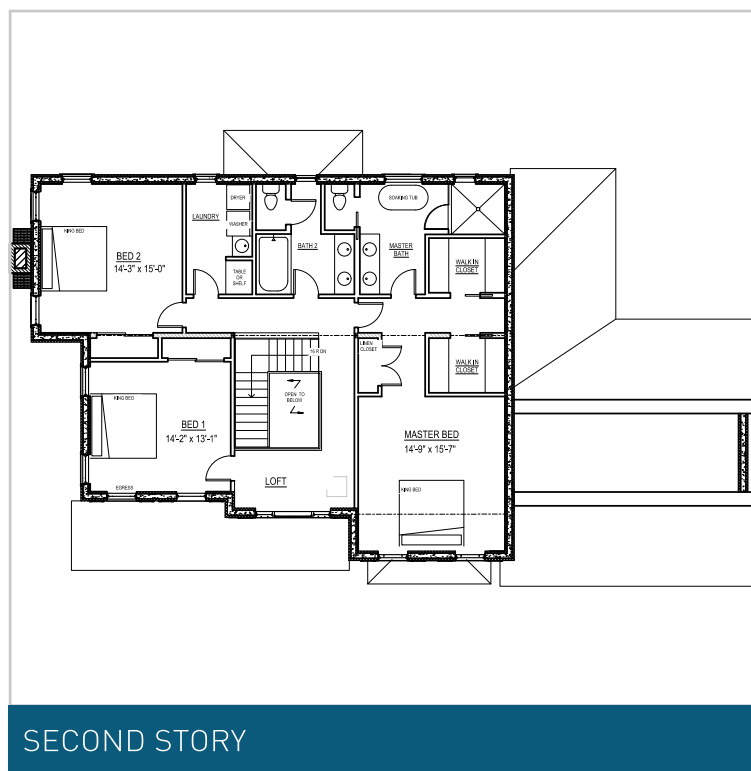
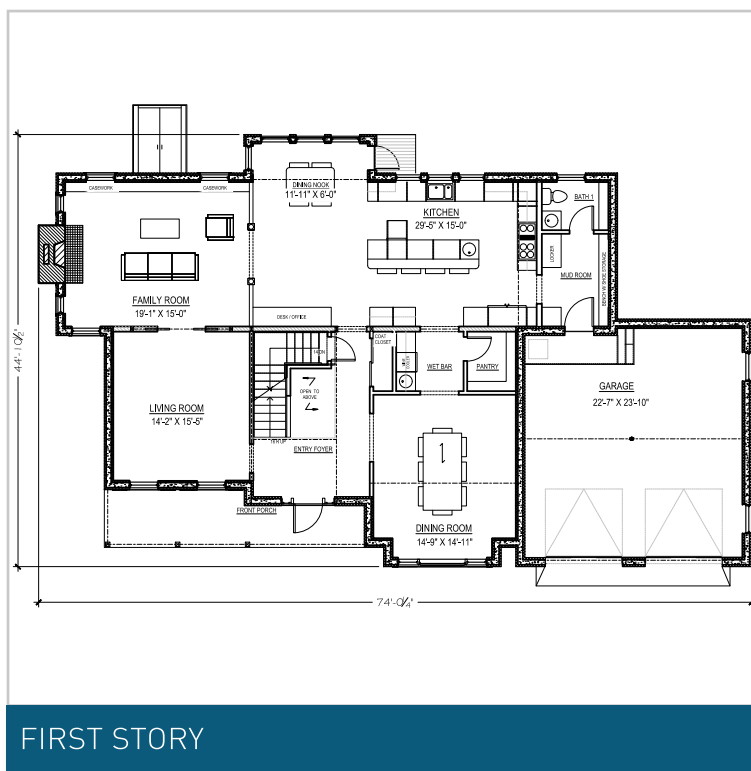
layout. Of course, they're more likely to cluster around the kitchen's island, but there's room for everyone.

SQUARE FEET	3173 sq ft
BEDROOMS	3
BATHROOMS	2.5

STORIES	2
DIMENSIONS	45' x 74'

This two-story farmhouse is ideal if you enjoy hosting friends and family. The eye-catching dining room has a wet bar attached, which gives the space a luxurious vibe. The walk-in pantry also sits in the wet bar area, giving owners additional storage space. Another eye-catching feature of this plan is the kitchen island that is large enough to prep while guests gather around. For a more casual dining experience, there is a cozy breakfast nook. For maximum entertainment, there are two spacious living

rooms side by side. Upstairs there are two guest bedrooms and the primary suite. There is a walk-in laundry room on the second floor for easy cleanup. The luxurious primary suite features two-walk-in closets, a private bathroom with a soaking tub, and a linen closet for additional storage.



WHY CHOOSE NUDURA® ICF FOR YOUR INSULATED CONCRETE FORM HOUSE?



ENERGY SAVINGS

Say goodbye to high heating and cooling costs in your new ICF home. Nudura ICFs can help improve energy efficiency by up to 58%* compared to traditional construction. [CLICK HERE](#) to learn more about how the solid mass of the Nudura ICF wall, combined with two continuous panels of EPS foam, help prevent energy loss through the wall.



INDOOR AIR QUALITY

Your new home built with Nudura ICFs will be airtight, enabling mechanical systems to heat, cool and ventilate more efficiently and minimizing the potential formation of mold and draft paths. Nudura ICFs do not support mold growth, nor do they emit CFCs or HCFCs. [CLICK HERE](#) for more information about how Nudura ICFs protect occupants and the environment.



SAFETY

Nudura ICFs provide a fire protection rating of up to 4 Hours – 4 times that of a typical wood frame home. Structures built with Nudura ICFs also can withstand winds up to 250 mph (402 kph) ensuring your family and home are safe and secure in almost any situation. [CLICK HERE](#) to learn more about disaster resilient buildings with insulated concrete forms.



SOUND DAMPENING

Providing a minimum STC (Sound Transmission Class) rating of STC 50**, Nudura ICFs act as an effective sound barrier by dampening sound vibrations from unwanted outside noise. [CLICK HERE](#) to learn more about how Nudura ICFs offer an effective sound proofing solution.

*As proven by third-party testing conducted by CLEB Laboratories and the Insulating Concrete Forms Manufacturers Association (ICFMA).

**STC 50 based on minimum 6" (152 mm) Nudura form concrete core thickness, installed with code compliant finishes mounted both sides of wall assembly in accordance with Nudura ICF installation procedures.



Interested in purchasing this plan?

A full plan set for this home is available for immediate purchase from houseplans.com.

To purchase the plan set for this home, scan the QR code or go to <https://share.hsforms.com/1zydxc71TUKun-9ANvLkrg2k07m>

3735 Green Road | Beachwood, OH 44122 | 866.468.6299 | nudura.com

Tremco Construction Products Group (CPG) brings together Tremco CPG Inc. and its Dryvit and Nudura brands; Willseal; Prebuck LLC; Tremco Barrier Solutions, Inc.; Weatherproofing Technologies, Inc. and its Pure Air Control Services and Canam Building Envelope Specialists offerings; and Weatherproofings Technologies Canada, Inc.

TREMCO
Construction Products Group

Use of the ® symbol indicates registration with the US Patent & Trademark Office and the Canadian Intellectual Property Office.
© Tremco CPG Inc. 2023

0323/BMTCS

tremcocpg.com