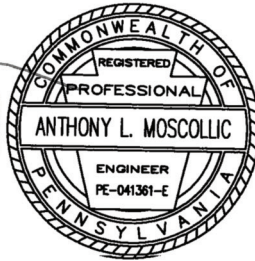
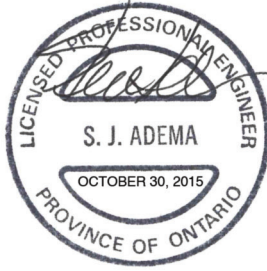
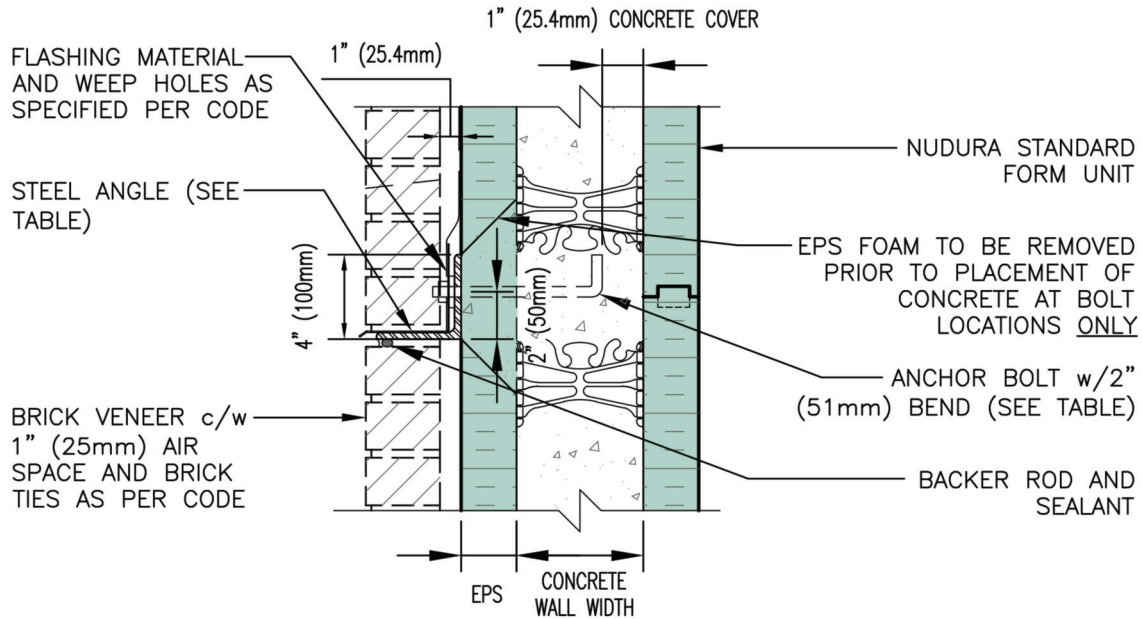


TYPICAL DETAILS C-10



DISCLAIMER NOTICE:
SPECIFIC INFORMATION
REQUIRED FOR COMPLIANCE
WITH LOCAL CODES IS THE
RESPONSIBILITY OF THE
DESIGNER



	HEIGHT OF SUPPORTED BRICK ABOVE ANGLE	
	10'-0" (3050mm)	20'-0" (6100mm)
ANGLE SIZE	L4" x 4" x 1/4" (L102mm x 102mm x 6.35mm)	L4" x 4" x 1/4" (L102mm x 102mm x 6.35mm)
ANCHOR SIZE	1/2" DIAMETER (12.5mm DIAMETER)	1/2" DIAMETER (12.5mm DIAMETER)
ANCHOR SPACING	24" (610mm)	16" (406mm)

NOTES:

- 1 ASSUMES BRICK INSTALLATION IN ACCORDANCE WITH APPLICABLE CODES.
- 2 MINIMUM STEEL $F_y=43.5$ ksi (300 MPa) YIELD STRENGTH FOR ANGLES.
- 3 ANGLES AND BOLTS TO BE GALVANIZED OR STAINLESS STEEL TO MEET THE REQUIREMENT OF TABLE 5.1 OF CSA A370-04 (CAN) OR ASTM E754 (USA) (CONNECTIONS FOR MASONRY ANCHORS AND TIES).



BRICK SHELF ANGLE
BACK OF ANGLE FLUSH
WITH EPS EXTERIOR
(MULTI-STORY APPLICATION)
PRE-INSTALLATION MOUNT

REV. NO. 004 KS	DWG NO. C-10
REV. DATE: SEPT 2015	
DRAWN BY J.N / N.L	SCALE: "Not to Scale"