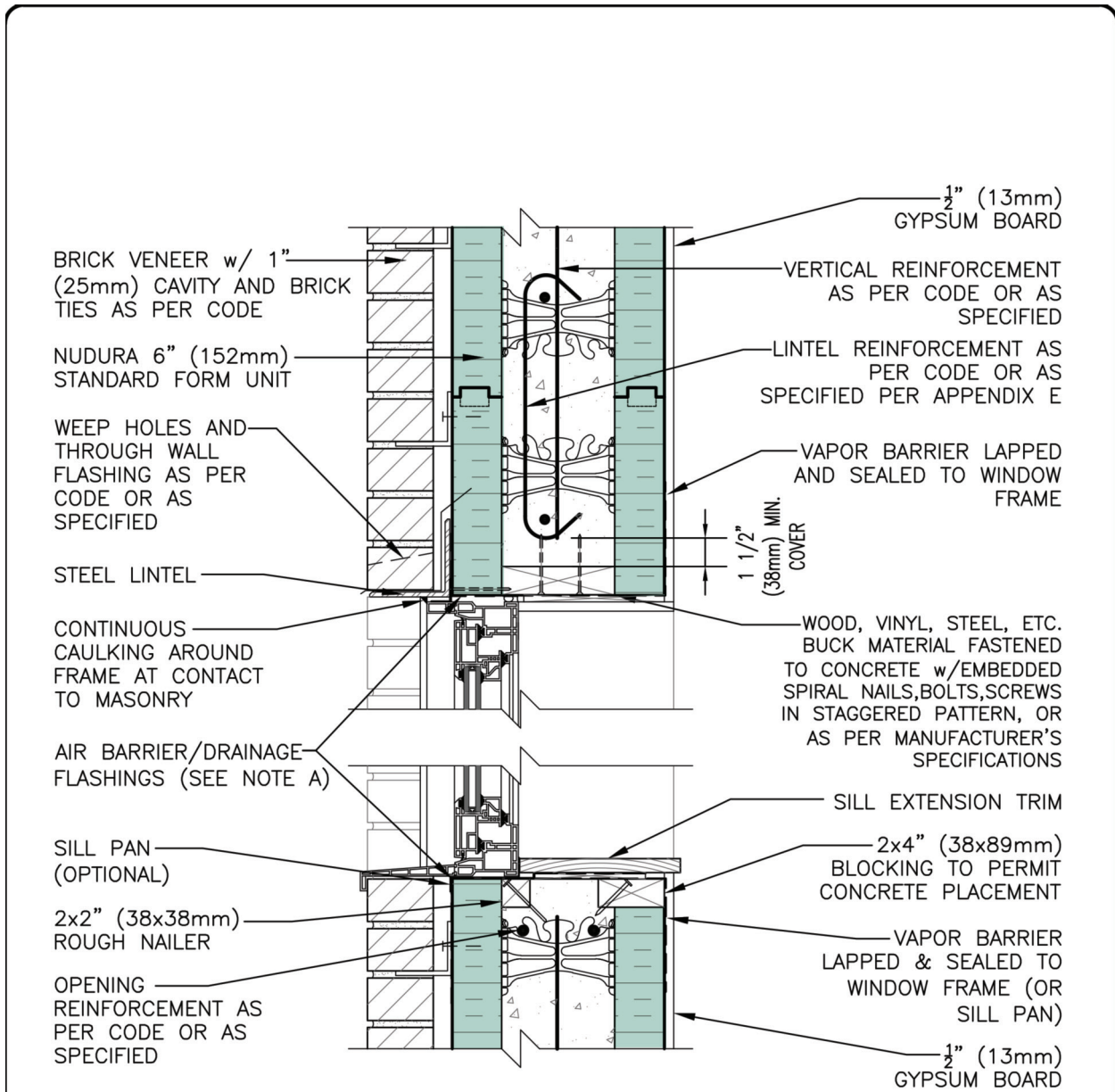


TYPICAL DETAILS C-22



NOTE A: AIR BARRIER/DRAINAGE FLASHINGS TO BE INSTALLED AROUND COMPLETE OPENING PERIMETER AS PER SECTION 9.1 OF THE NUDURA INSTALLATION MANUAL OR AS DETAILED BY LOCAL APPLICABLE CODES (CODE GOVERNS)

DISCLAIMER NOTICE:
SPECIFIC INFORMATION
REQUIRED FOR COMPLIANCE
WITH LOCAL CODES IS THE
RESPONSIBILITY OF THE
DESIGNER



STANDARD 6" (152mm) FORM UNIT
WINDOW HEAD/SILL DETAIL
BRICK VENEER FINISH

REV. NO. 001 KS	DWG NO. C-22
DATE: SEPT 2015	
DRAWN BY: K. STILL	SCALE: 1 1/2"=1'-0"