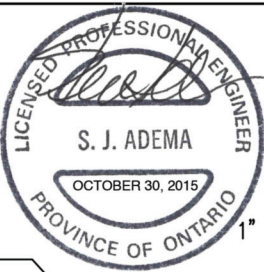
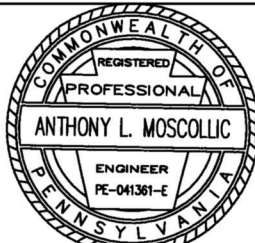
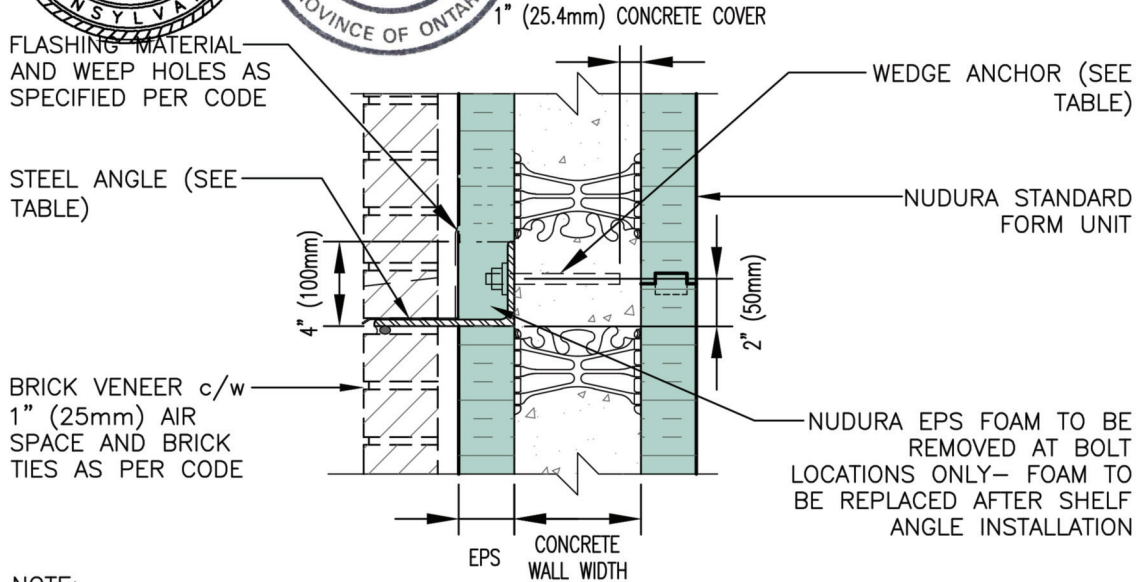


TYPICAL DETAILS C-11



DISCLAIMER NOTICE:
SPECIFIC INFORMATION
REQUIRED FOR COMPLIANCE
WITH LOCAL CODES IS THE
RESPONSIBILITY OF THE
DESIGNER



NOTE:
MAINTAIN u/s OF ANCHOR SHAFT 2" (50mm) MINIMUM
CLEARANCE FROM WEBS AND 1" (25mm) COVER ALL AROUND

HILTI ANCHORS TO BE SIZED AS PER TABLE BELOW

ANGLE SIZE	HEIGHT OF SUPPORTED BRICK ABOVE ANGLE	
	10'-0" (3050mm)	20'-0" (6100mm)
	L6" x 4" x 5/16" (L152mm x 102mm x 7.9mm)	L6" x 4" x 3/8" (L152mm x 102mm x 9.5mm)
ANCHOR SIZE */ EMBEDMENT	HSL M12/25 3.2" (80mm)	HSL M16/25 4.2" (105mm)
ANCHOR SPACING	16" (406mm)	16" (406mm)

* ANCHORS SPECIFIED ABOVE ARE HILTI HEAVY DUTY ANCHORS

NOTE:

- CONTRACTOR TO INSTALL ANCHORS AS PER SUPPLIER'S SPECIFICATIONS.
- ASSUMES BRICK INSTALLATION IN ACCORDANCE WITH APPLICABLE CODES.
- MINIMUM STEEL $F_y=43.5$ ksi (300 MPa) YIELD STRENGTH FOR ANGLES
- ANGLES AND BOLTS TO BE GALVANIZED OR STAINLESS STEEL TO MEET THE REQUIREMENT OF TABLE 5.1 OF CSA A370-04 (CAN) OR ASTM E754 (USA) (CONNECTIONS FOR MASONRY ANCHORS AND TIES).



BRICK SHELF ANGLE
BACK OF ANGLE FLUSH
WITH CONCRETE
(POST INSTALLATION MOUNT)

REV. NO. 004 KS	DWG NO. C-11
REV. DATE: SEPT 2015	
DRAWN BY J.N / N.L	SCALE: "Not to Scale"