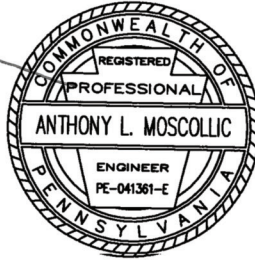
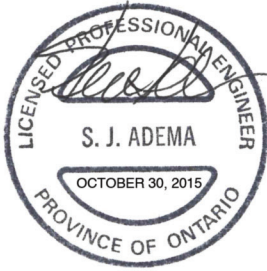
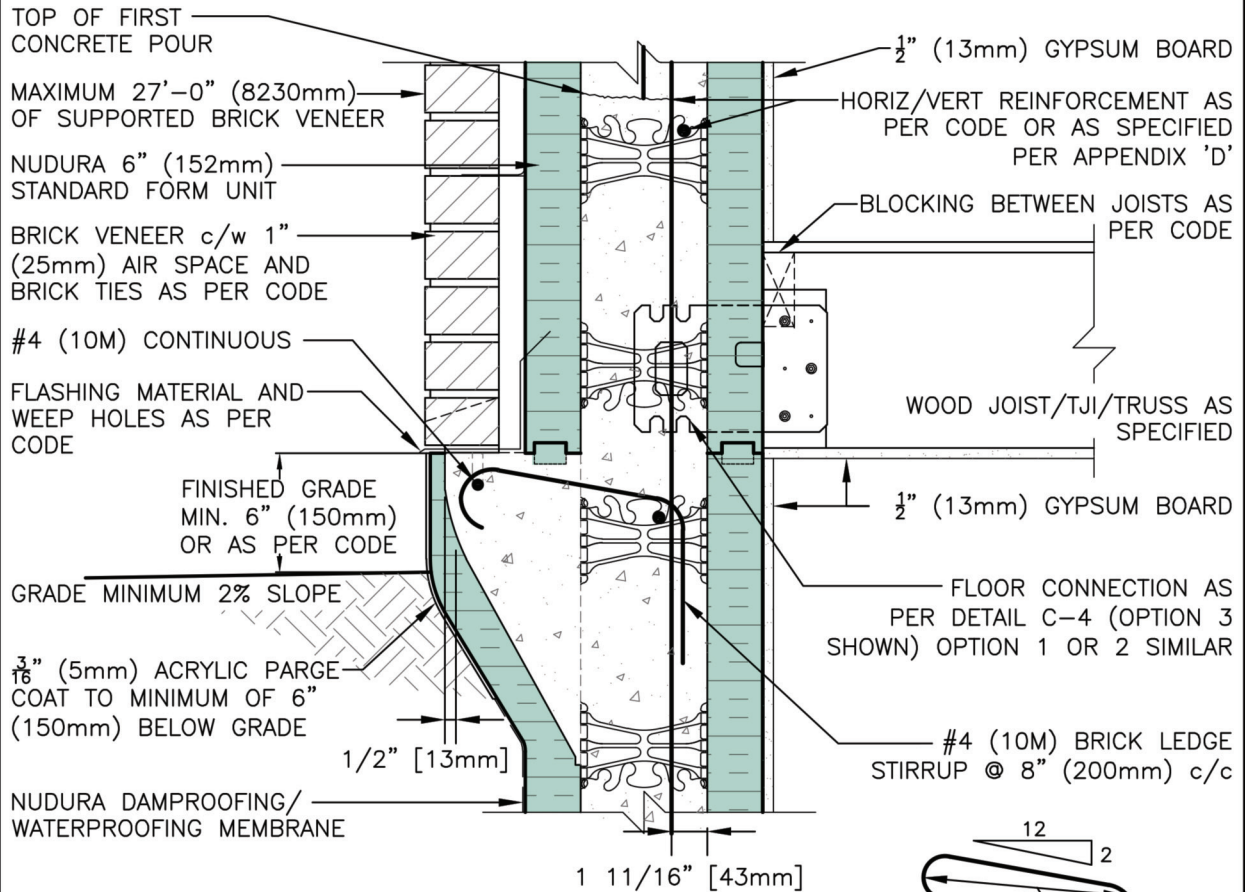


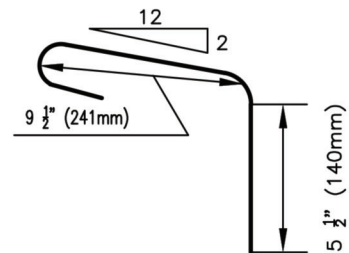
# TYPICAL DETAILS C-5



**DISCLAIMER NOTICE:**  
SPECIFIC INFORMATION  
REQUIRED FOR COMPLIANCE  
WITH LOCAL CODES IS THE  
RESPONSIBILITY OF THE  
DESIGNER



- NOTES:**
1. MINIMUM CONCRETE COMPRESSIVE STRENGTH AT 28 DAYS 3000 PSI (20 MPa).
  2. REINFORCING STEEL SHALL BE HARD GRADE DEFORMED BARS CONFORMING TO ASTM A615/A615M-05A-60,000 ksi YIELD STRENGTH (USA). (CSA G30.18-A92 (R2002)  $F_y=400MPa$  (CAN).
  3. WALL REINFORCING SHALL BE IN ACCORDANCE WITH NUDURA INTEGRATED BUILDING SYSTEM, LOCAL CODE OR ENGINEERING DRAWINGS. (AS SPECIFIED)
  4. BRICK UNIT WEIGHT: 41 lbs/ft<sup>2</sup> (1.9kPa) IN VERTICAL PLANE.
  5. MAXIMUM WALL HEIGHT: 27 ft (8.23m) UNLESS ENGINEERED OTHERWISE.
  6. ASSUME BRICK INSTALLATION IN ACCORDANCE WITH APPLICABLE CODES
  7. BRICK LEDGE DETAIL ADEQUATE FOR SEISMIC AREAS  $S_a$  0.2 ≤ 1.2 (CAN) & MAXIMUM SEISMIC CATEGORY D<sub>2</sub> (USA)



#4 (10M) BRICK LEDGE STIRRUP FROM 20" (509mm) LENGTH OF BAR



NUDURA 6" (152mm) BRICK LEDGE  
AT GRADE  
NUDURA 6" (152mm) FORM UNIT  
ABOVE GRADE  
BRICK VENEER FINISH

REV. NO.  
006 KS  
REV. DATE:  
SEPT 2015  
DRAWN BY:  
J.N / N.L

DWG NO.  
C-5  
SCALE:  
"Not to Scale"