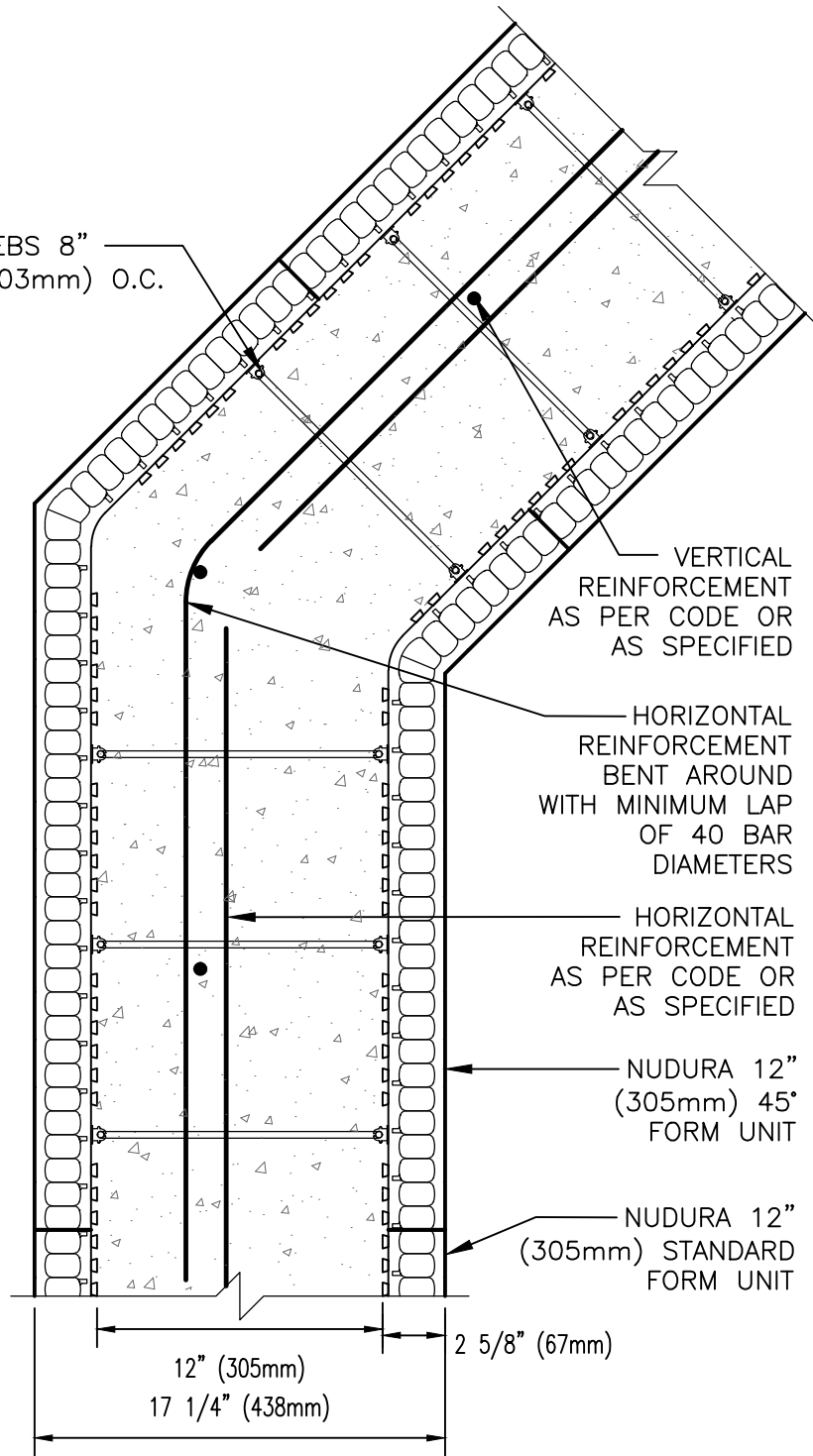


WEBS 8" (203mm) O.C.



VERTICAL REINFORCEMENT AS PER CODE OR AS SPECIFIED

HORIZONTAL REINFORCEMENT BENT AROUND WITH MINIMUM LAP OF 40 BAR DIAMETERS

HORIZONTAL REINFORCEMENT AS PER CODE OR AS SPECIFIED

NUDURA 12" (305mm) 45° FORM UNIT

NUDURA 12" (305mm) STANDARD FORM UNIT

12" (305mm)
17 1/4" (438mm)

2 5/8" (67mm)

DISCLAIMER NOTICE:
SPECIFIC INFORMATION
REQUIRED FOR COMPLIANCE
WITH LOCAL CODES IS THE
RESPONSIBILITY OF THE
DESIGNER



NUDURA

INTEGRATED BUILDING TECHNOLOGY

Building Value.

NUDURA 12" (305mm)
45° FORM REINFORCEMENT DETAIL
PLAN VIEW

REV. NO.
002 TV

DATE:
APR 2007

DRAWN BY:
N. LEMMON

DWG NO.

A12B04

SCALE:
1 : 8