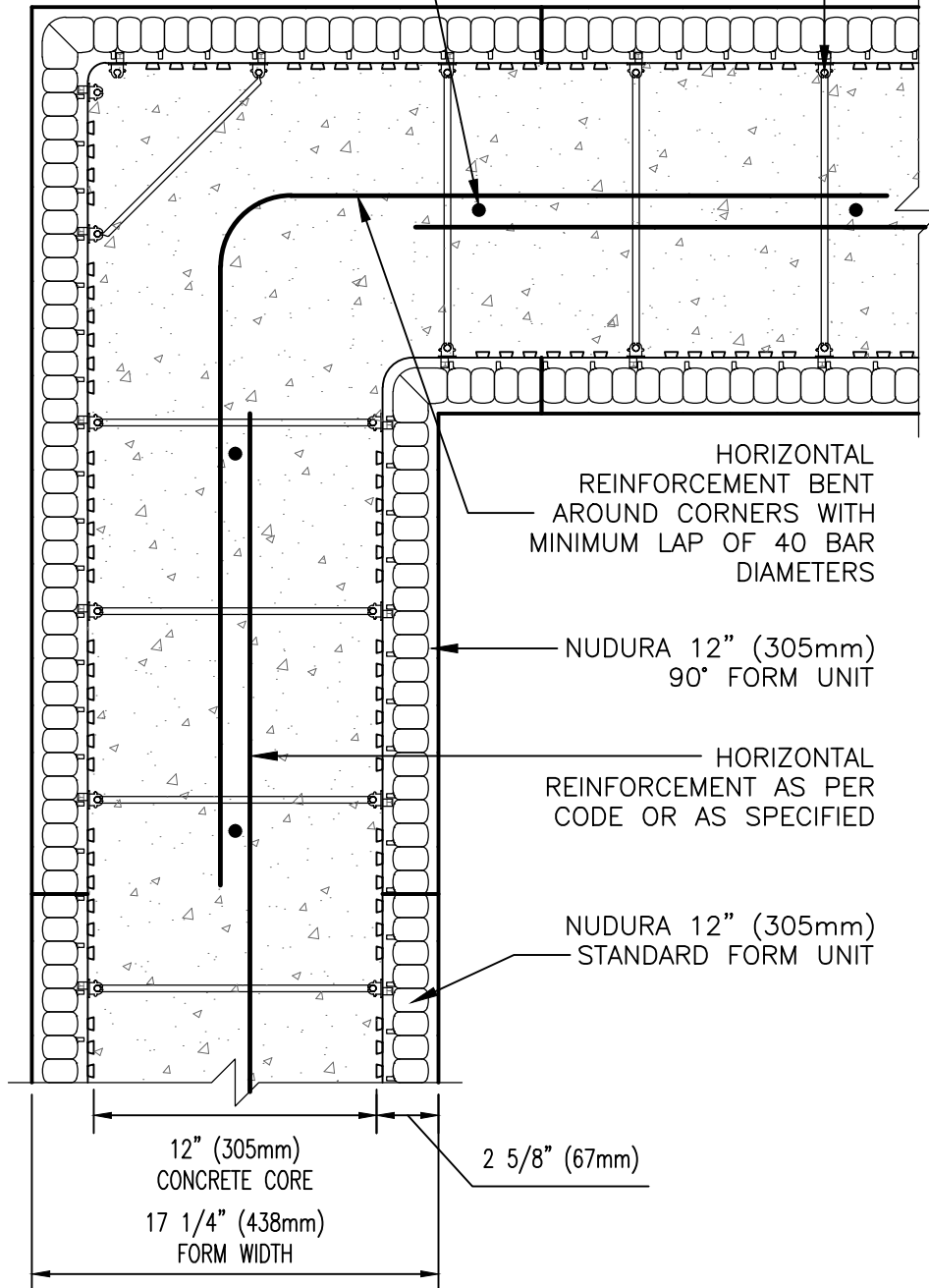


VERTICAL REINFORCEMENT
AS PER CODE OR AS
SPECIFIED

WEBS 8"
(203mm) O.C.



HORIZONTAL
REINFORCEMENT BENT
AROUND CORNERS WITH
MINIMUM LAP OF 40 BAR
DIAMETERS

NUDURA 12" (305mm)
90° FORM UNIT

HORIZONTAL
REINFORCEMENT AS PER
CODE OR AS SPECIFIED

NUDURA 12" (305mm)
STANDARD FORM UNIT

12" (305mm)
CONCRETE CORE
17 1/4" (438mm)
FORM WIDTH

2 5/8" (67mm)

DISCLAIMER NOTICE:
SPECIFIC INFORMATION
REQUIRED FOR COMPLIANCE
WITH LOCAL CODES IS THE
RESPONSIBILITY OF THE
DESIGNER



NUDURA 12" (305)
90° FORM REINFORCEMENT DETAIL
PLAN VIEW

REV. NO. 002 TV	DWG NO. A12B02
DATE: APR 2007	
DRAWN BY: J. NEILON	SCALE: 1 : 8