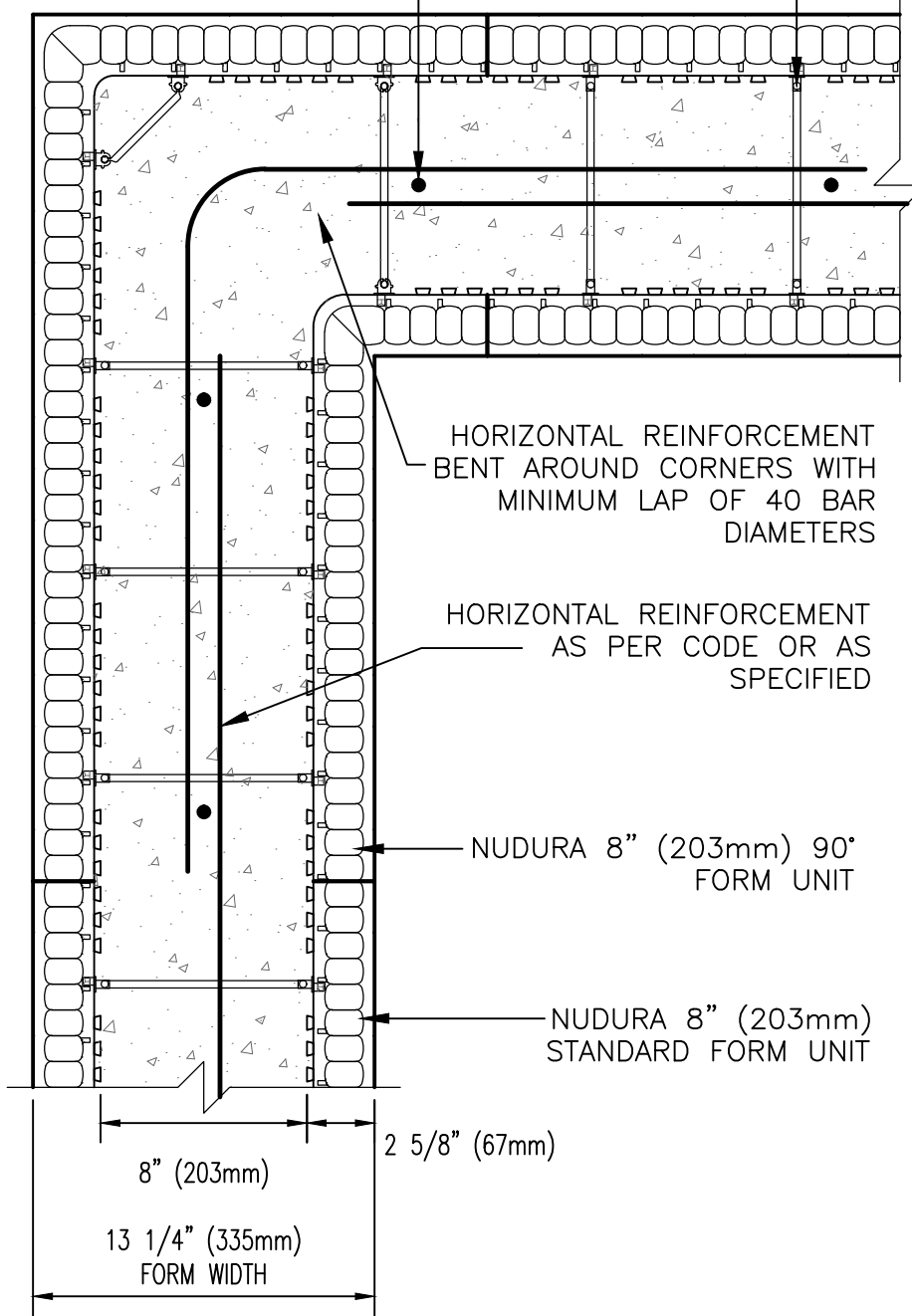


VERTICAL REINFORCEMENT  
AS PER CODE OR AS  
SPECIFIED

WEBS 8"  
(203mm) O.C.



HORIZONTAL REINFORCEMENT  
BENT AROUND CORNERS WITH  
MINIMUM LAP OF 40 BAR  
DIAMETERS

HORIZONTAL REINFORCEMENT  
AS PER CODE OR AS  
SPECIFIED

NUDURA 8" (203mm) 90°  
FORM UNIT

NUDURA 8" (203mm)  
STANDARD FORM UNIT

8" (203mm)

2 5/8" (67mm)

13 1/4" (335mm)  
FORM WIDTH

**DISCLAIMER NOTICE:**  
SPECIFIC INFORMATION  
REQUIRED FOR COMPLIANCE  
WITH LOCAL CODES IS THE  
RESPONSIBILITY OF THE  
DESIGNER



**NUDURA**

**INTEGRATED BUILDING TECHNOLOGY**

*Building Value.*

NUDURA 8" (152mm)  
90° FORM REINFORCEMENT DETAIL  
PLAN VIEW

REV. NO.  
002 TV  
DATE:  
APR 2007  
DRAWN BY:  
J. NEILON

DWG NO.  
A8B03  
SCALE:  
1 : 8