

NUDURA 8" (203mm)
STANDARD FORM UNIT

1/2" (13mm) GYPSUM
BOARD

HORIZ/VERT
REINFORCEMENT AS PER
CODE OR AS SPECIFIED

HOOK REINFORCEMENT
AS PER CODE OR AS
SPECIFIED

NUDURA
WATERPROOF MEMBRANE

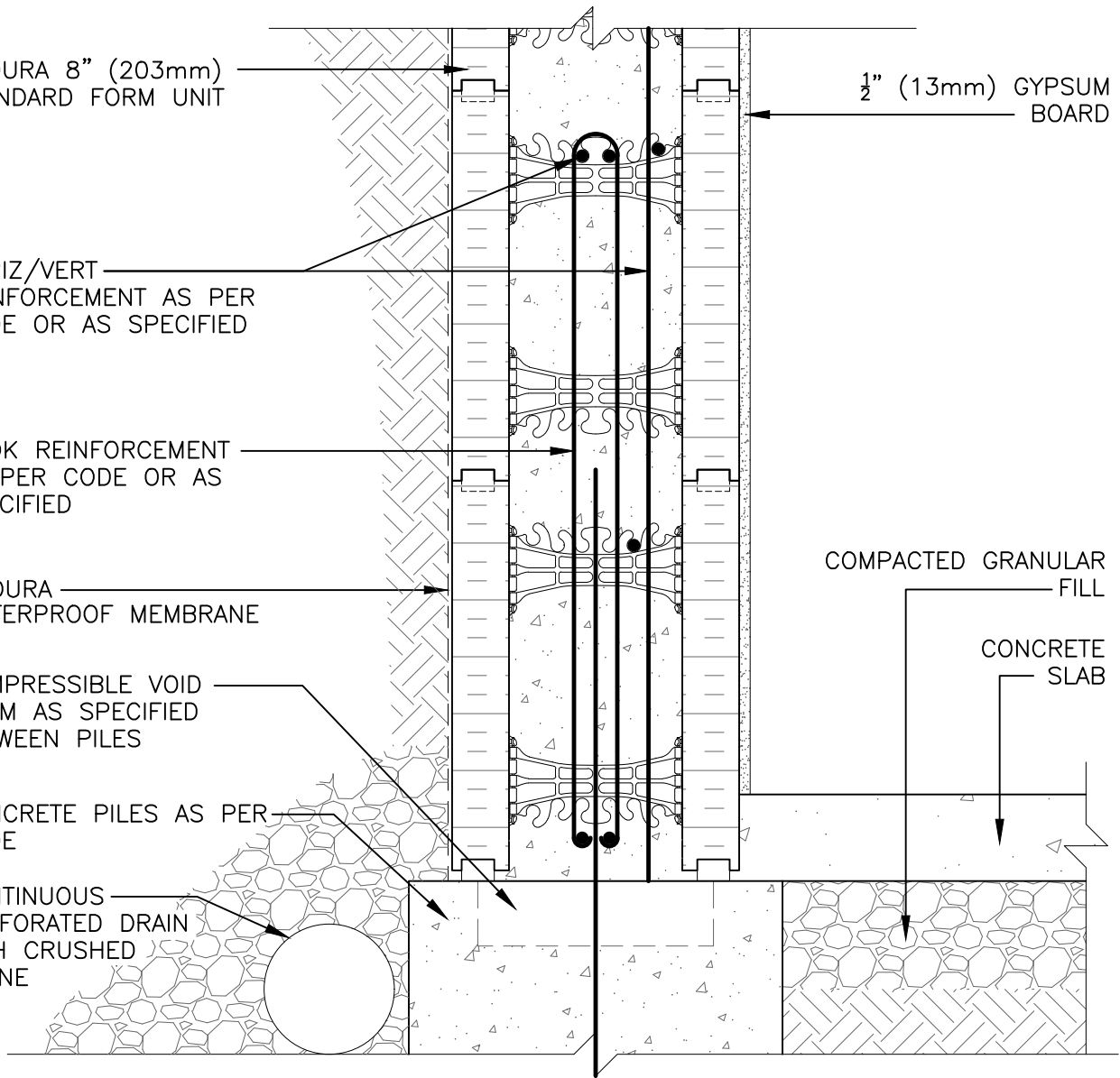
COMPRESSIBLE VOID
FORM AS SPECIFIED
BETWEEN PILES

CONCRETE PILES AS PER
CODE

CONTINUOUS
PERFORATED DRAIN
WITH CRUSHED
STONE

COMPACTED GRANULAR
FILL

CONCRETE
SLAB



DISCLAIMER NOTICE:
SPECIFIC INFORMATION
REQUIRED FOR COMPLIANCE
WITH LOCAL CODES IS THE
RESPONSIBILITY OF THE
DESIGNER

The architecture, engineering, and design of the project using the Nudura products are the responsibility of the project's design professional. All products and systems must comply with local building codes and standards. This detail is for general information and guidance only and Nudura specifically disclaims any liability for the use of this detail. The project design professional determines, in its sole discretion, whether this detail or a functionally equivalent detail is best suited for the project. This detail is subject to change without notice. Contact Nudura to ensure you have the most recent version.

Below Grade Construction

Detail: Nudura 8" (203mm) Form Unit Stem Wall On Piles With
Concrete Slab Below Grade

File Name:

B8C09

Drawn by: T.V

Scale: 1 : 8

Date: 11/30/2021



Nudura Technical Support: 866-468-6299
International: +1 705-726-9499

tremcocpg.com



Construction Products Group