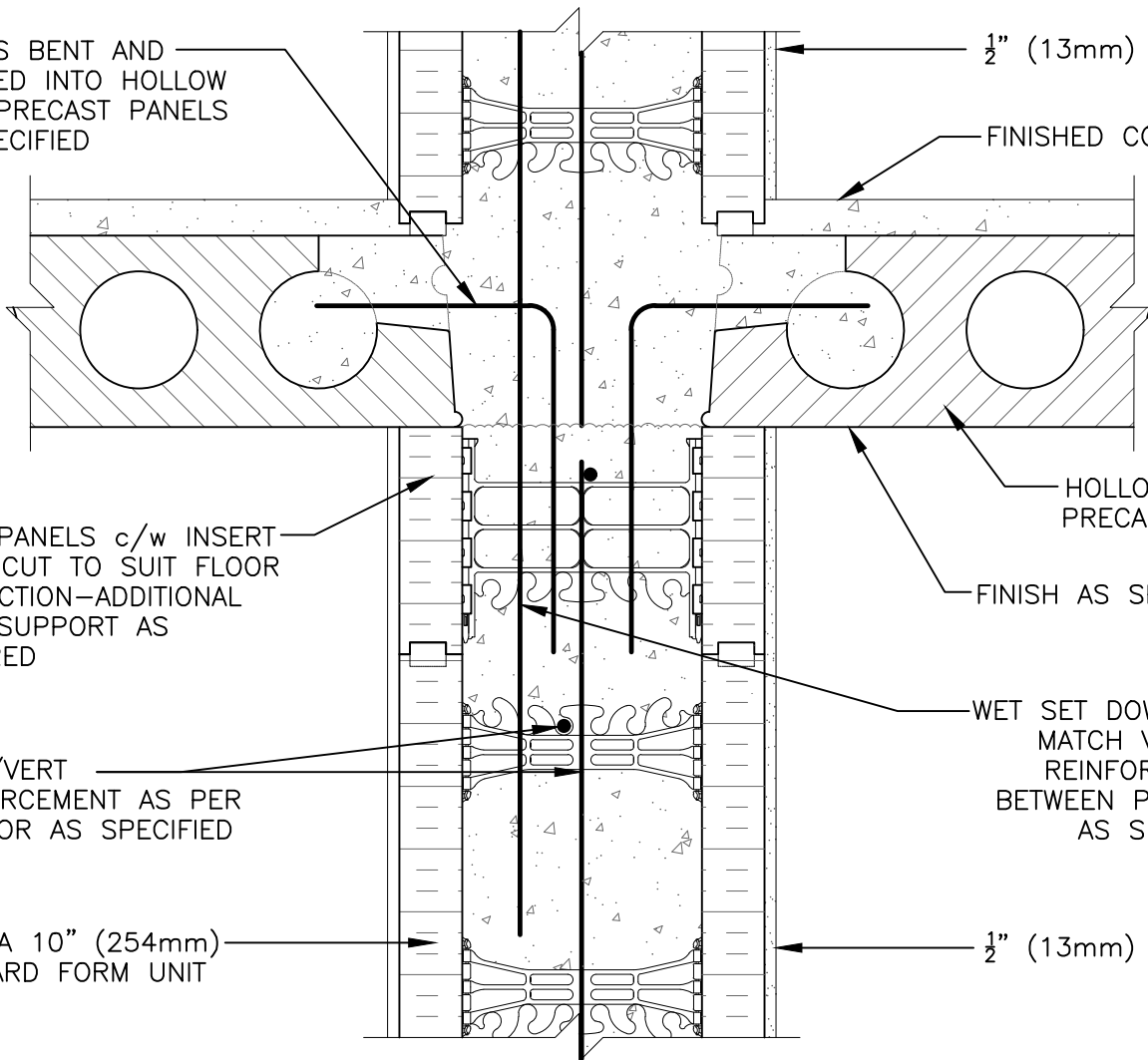


DOWELS BENT AND GROUTED INTO HOLLOW CORE PRECAST PANELS AS SPECIFIED

1/2" (13mm) GYPSUM BOARD

FINISHED CONCRETE TOPPING



FORM PANELS c/w INSERT WEBS—CUT TO SUIT FLOOR CONNECTION—ADDITIONAL FORM SUPPORT AS REQUIRED

HOLLOW CORE PRECAST SLAB

FINISH AS SPECIFIED

HORIZ/VERT REINFORCEMENT AS PER CODE OR AS SPECIFIED

WET SET DOWELS TO MATCH VERTICAL REINFORCEMENT BETWEEN POUR OR AS SPECIFIED

NUDURA 10" (254mm) STANDARD FORM UNIT

1/2" (13mm) GYPSUM BOARD

The architecture, engineering, and design of the project using the Nudura products are the responsibility of the project's design professional. All products and systems must comply with local building codes and standards. This detail is for general information and guidance only and Nudura specifically disclaims any liability for the use of this detail. The project design professional determines, in its sole discretion, whether this detail or a functionally equivalent detail is best suited for the project. This detail is subject to change without notice. Contact Nudura to ensure you have the most recent version.

### Non-Combustible Construction

Detail: Nudura 10" (254mm) Form Unit, Hollow Core Precast Slab, Non-Bearing Demising Wall

File Name:

Drawn by: KS

Scale: 1 : 8

Date: 12/10/2021

G10A02



Nudura Technical Support: 866-468-6299  
International: +1 705-726-9499



Construction Products Group

tremcocpg.com