

NUDURA 'EZ' BUCK w/
DIMENSIONAL LUMBER AS SHOWN

ALTERNATIVE BUCK METHODS
APPLIED:

WOOD, VINYL, STEEL, ETC. BUCK
MATERIAL FASTENED TO
CONCRETE w/ EMBEDDED SPIRAL
NAILS, BOLTS, SCREWS IN
STAGGERED PATTERN, OR AS PER
MANUFACTURERS SPECIFICATION

1/2" (13mm) GYPSUM
BOARD

NUDURA 12" (305mm)
STANDARD FORM UNIT

HORIZ/VERT
REINFORCEMENT AS PER
CODE OR AS SPECIFIED

BRICK VENEER c/w 1"
(25mm) AIR SPACE AND
BRICK TIES

OPENING REINFORCEMENT AS
PER CODE OR AS SPECIFIED

BRICK RETURN TO COVER AIR
SPACE

VAPOR BARRIER
SEALED TO FRAME

GYPSUM BOARD
RETURN TO FRAME

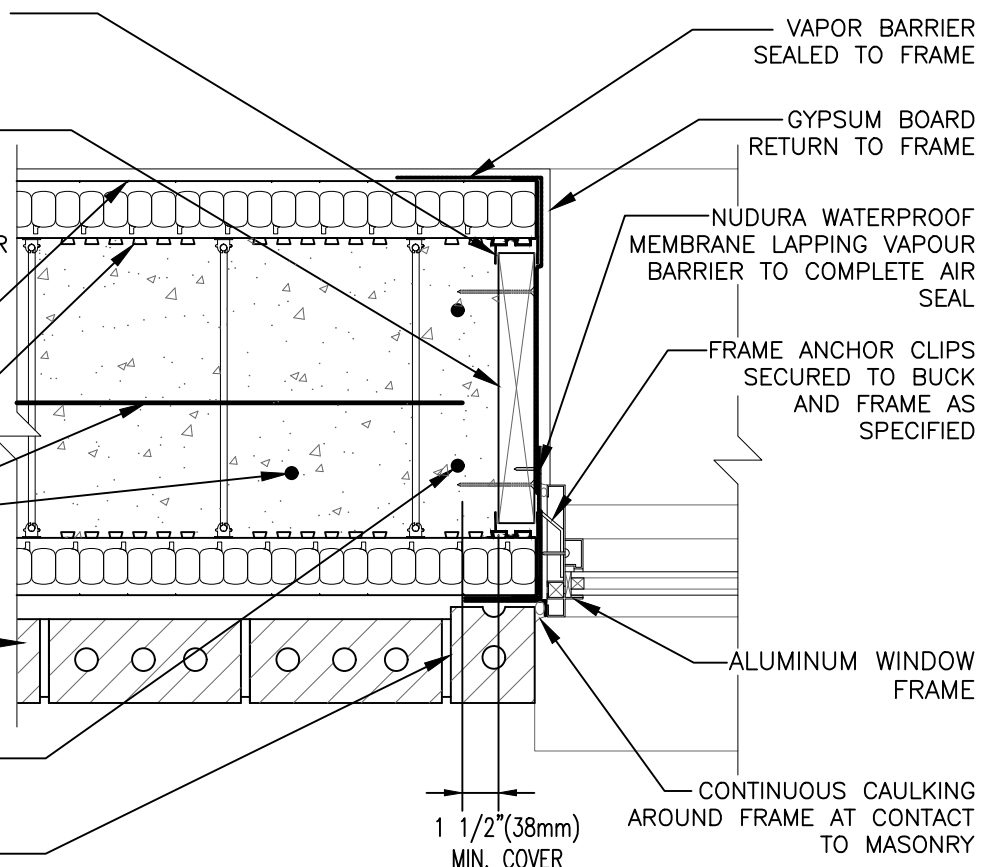
NUDURA WATERPROOF
MEMBRANE LAPPING VAPOUR
BARRIER TO COMPLETE AIR
SEAL

FRAME ANCHOR CLIPS
SECURED TO BUCK
AND FRAME AS
SPECIFIED

ALUMINUM WINDOW
FRAME

CONTINUOUS CAULKING
AROUND FRAME AT CONTACT
TO MASONRY

1 1/2" (38mm)
MIN. COVER



THIS DETAIL IS SUITABLE FOR NON-COMBUSTIBLE 1 TO 3 STOREY HIGH APPLICATIONS AS
PERMITTED UNDER LOCAL CODES; FOR WINDOWS IN BRICK CLAD MULTI-STOREY
APPLICATIONS, REFER TO DETAIL E12D06 UNDER THIS SECTION

The architecture, engineering, and design of the project using the Nudura products are the responsibility of the project's design professional. All products and systems must comply with local building codes and standards. This detail is for general information and guidance only and Nudura specifically disclaims any liability for the use of this detail. The project design professional determines, in its sole discretion, whether this detail or a functionally equivalent detail is best suited for the project. This detail is subject to change without notice. Contact Nudura to ensure you have the most recent version.

Non-Combustible Construction



Nudura Technical Support: 866-468-6299
International: +1 705-726-9499

Detail: Nudura 12" (305mm) Form Unit, Window Jamb Detail,
Aluminum Framed Window, Wood Rough Buck, Brick Veneer Finish

Drawn by: TVC

Scale: 1 : 8

Date: 5/24/2022

File Name:

E12D04



Construction Products Group

tremcocpg.com