

NUDURA 10" (254mm)
STANDARD FORM UNIT

EXTERIOR FINISH AS
SPECIFIED

HORIZ/VERT
REINFORCEMENT AS PER
CODE OR AS SPECIFIED

FORM PANELS c/w
INSERT WEBS-CUT TO
SUIT FLOOR
CONNECTION-ADDITIONAL
FORM SUPPORT AS
REQUIRED

WET SET FIELD DOWELS
FIELD BENT INTO SLAB
AS SPECIFIED

$\frac{3}{16}$ " (5mm)
ACRYLIC PARGE COAT

NUDURA WATERPROOF
MEMBRANE

WET SET DOWELS TO
MATCH VERTICAL
REINFORCEMENT
BETWEEN POURS OR AS
SPECIFIED

$\frac{1}{2}$ " (13mm) GYPSUM
BOARD

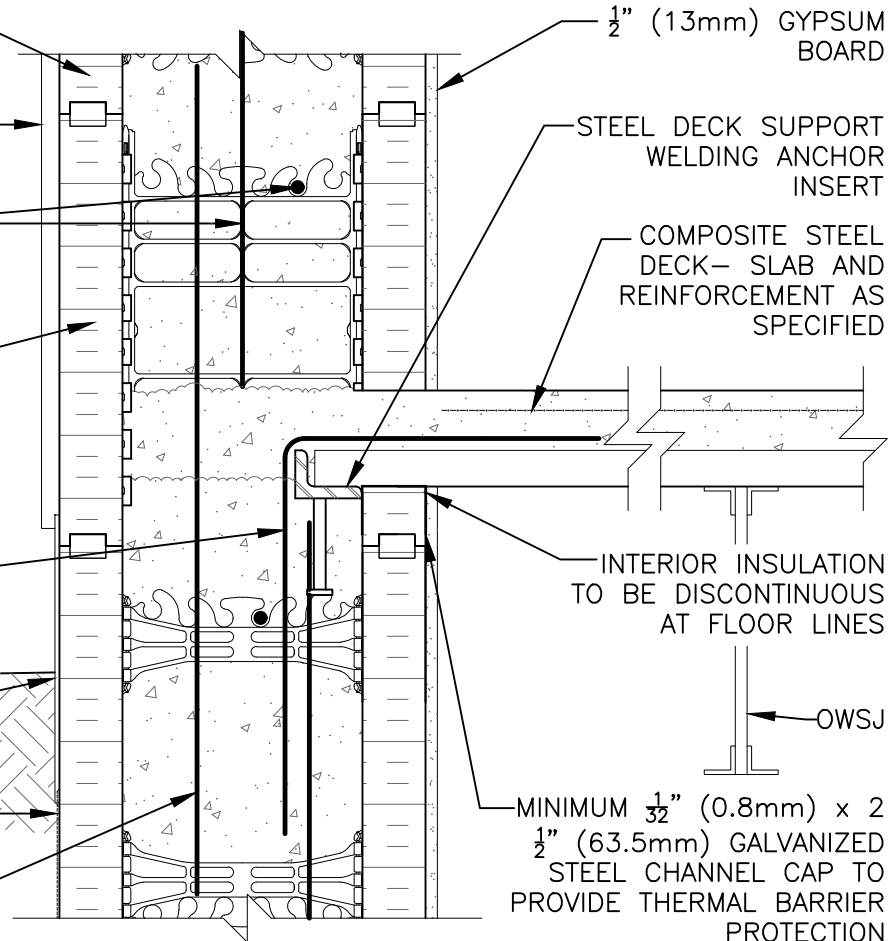
STEEL DECK SUPPORT
WELDING ANCHOR
INSERT

COMPOSITE STEEL
DECK- SLAB AND
REINFORCEMENT AS
SPECIFIED

INTERIOR INSULATION
TO BE DISCONTINUOUS
AT FLOOR LINES

OWSJ

MINIMUM $\frac{1}{32}$ " (0.8mm) x 2
 $\frac{1}{2}$ " (63.5mm) GALVANIZED
STEEL CHANNEL CAP TO
PROVIDE THERMAL BARRIER
PROTECTION



The architecture, engineering, and design of the project using the Nudura products are the responsibility of the project's design professional. All products and systems must comply with local building codes and standards. This detail is for general information and guidance only and Nudura specifically disclaims any liability for the use of this detail. The project design professional determines, in its sole discretion, whether this detail or a functionally equivalent detail is best suited for the project. This detail is subject to change without notice. Contact Nudura to ensure you have the most recent version.

Non-Combustible Construction

Detail: Nudura 10" (254mm) Form Unit, Composite Steel Deck-Slab, Steel Joist on Side Wall, Exterior Finish as Specified			File Name:
Drawn by: TVC	Scale: 1 : 8	Date: 12/21/2021	D10C02
<small>tremcocpg.com</small>			

