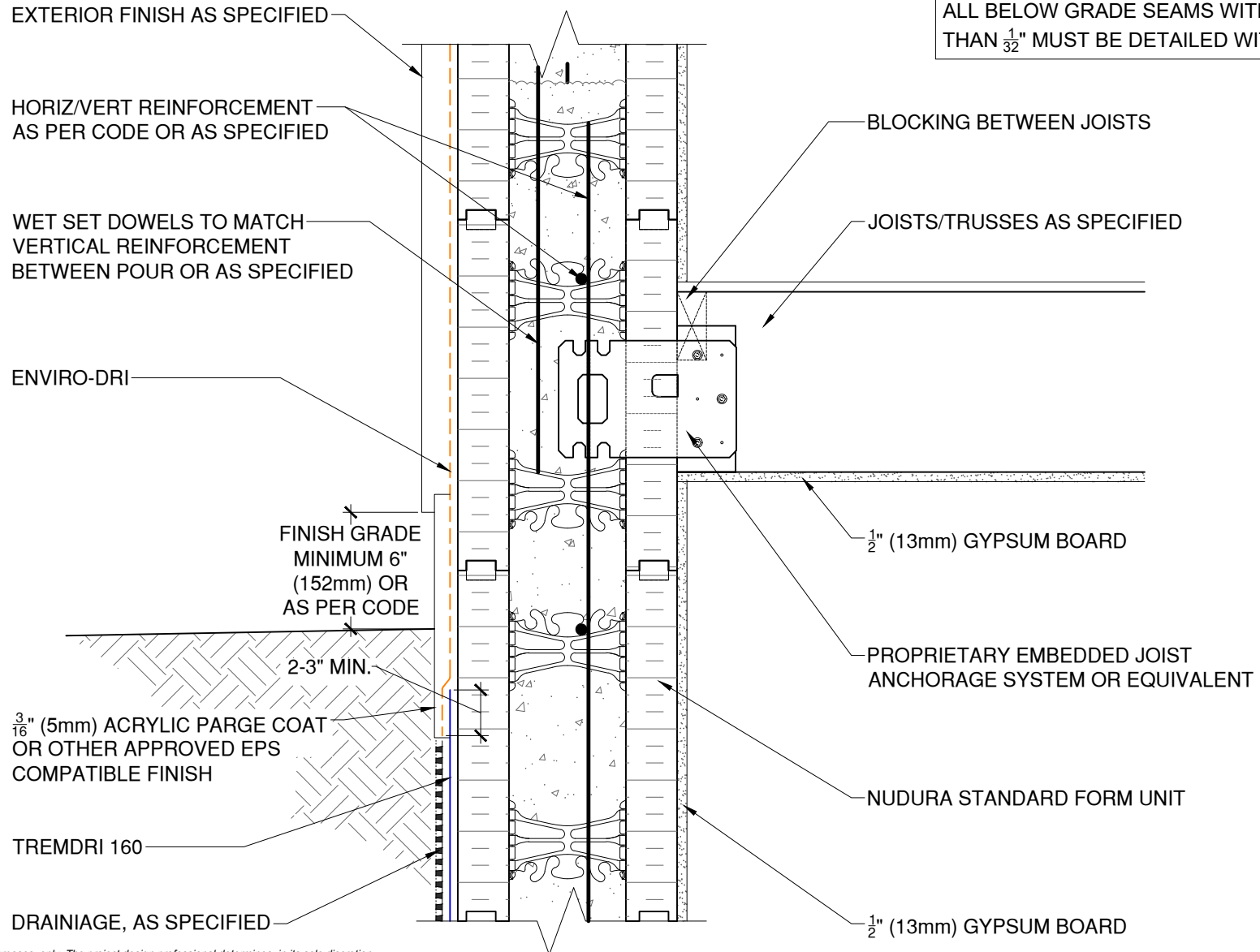


NOTE: ALL ABOVE GRADE SEAMS MUST BE DETAILED WITH DYMONIC 100 OR JOINT FABRIC.

ALL BELOW GRADE SEAMS WITH GAPS LARGER THAN $\frac{1}{32}$ " MUST BE DETAILED WITH DYMONIC 100



This detail is for general informational purposes, only. The project design professional determines, in its sole discretion, whether this detail or a functionally equivalent detail is best suited for the project with respect to any architecture, engineering, and design requirements, including any local building code requirements. If this document is not reviewed and the product is not approved for use by a licensed design professional, the customer agrees that the detail may contain substantive flaws requiring correction, and hereby releases Tremco CPG Inc. from any and all liability related to the design and installation of the product. This detail is subject to change without notice. Contact Tremco to ensure you have the most recent version.

Light Commercial/Residential Details

 <p>Nudura Technical Support: 866-468-6299 International: +1 705-726-9499</p>	Detail: Residential Below Grade to Above Grade Transition - TREMdri 160			File Name:	R-T-01	 <p>Construction Products Group</p>
	Drawn by: KAB	Checked by: KS/RW/JS/CB	Scale: NTS	Date: 9/15/2023		
www.tremcocpg.com						