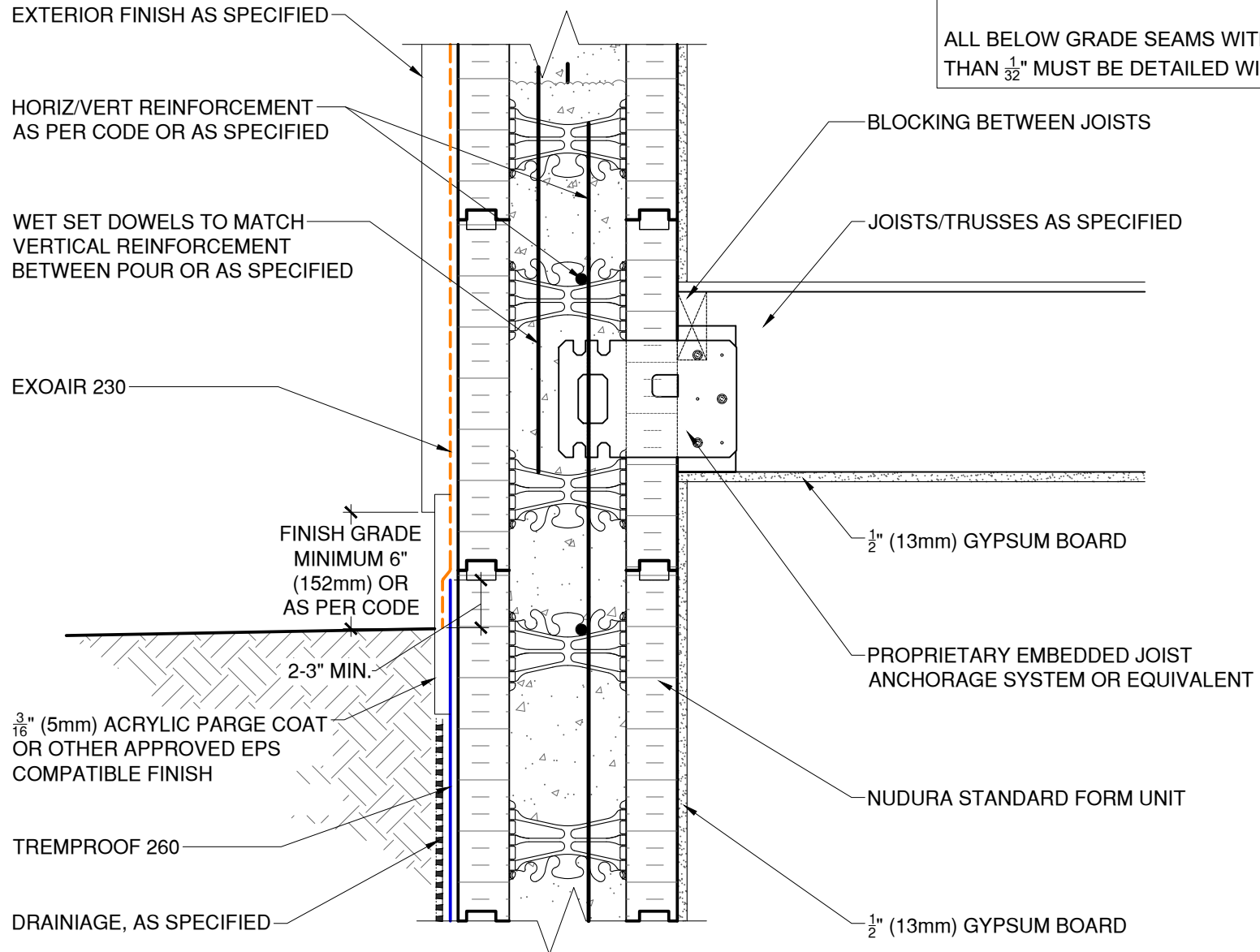


NOTE: ALL ABOVE GRADE SEAMS WITH GAPS LARGER THAN $\frac{1}{16}$ " MUST BE DETAILED WITH DYMONIC 100.

ALL BELOW GRADE SEAMS WITH GAPS LARGER THAN $\frac{1}{32}$ " MUST BE DETAILED WITH DYMONIC 100



The architecture, engineering, and design of the project using the Tremco, Nudura and Prebuck products are the responsibility of the project's design professional. All products and systems must comply with local building codes and standards. This detail is for general information and guidance only and Tremco, Nudura and Prebuck specifically disclaims any liability for the use of this detail. The project design professional determines, in its sole discretion, whether this detail or a functionally equivalent detail is best suited for the project. This detail is subject to change without notice. Contact Tremco, Nudura and Prebuck to ensure you have the most recent version.

Light Commercial/Residential Details

 <p>Nudura Technical Support: 866-468-6299 International: +1 705-726-9499</p>	Detail: Light Commercial Below Grade to Above Grade Transition			File Name:	 <p>LC-T-01 Construction Products Group</p>
	Drawn by: KAB	Checked by: KS/RW/JS/CB	Scale: NTS	Date: 3/3/2022	
www.tremcocpg.com					