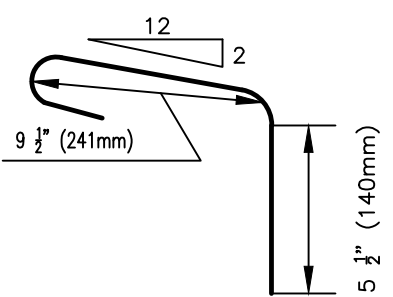
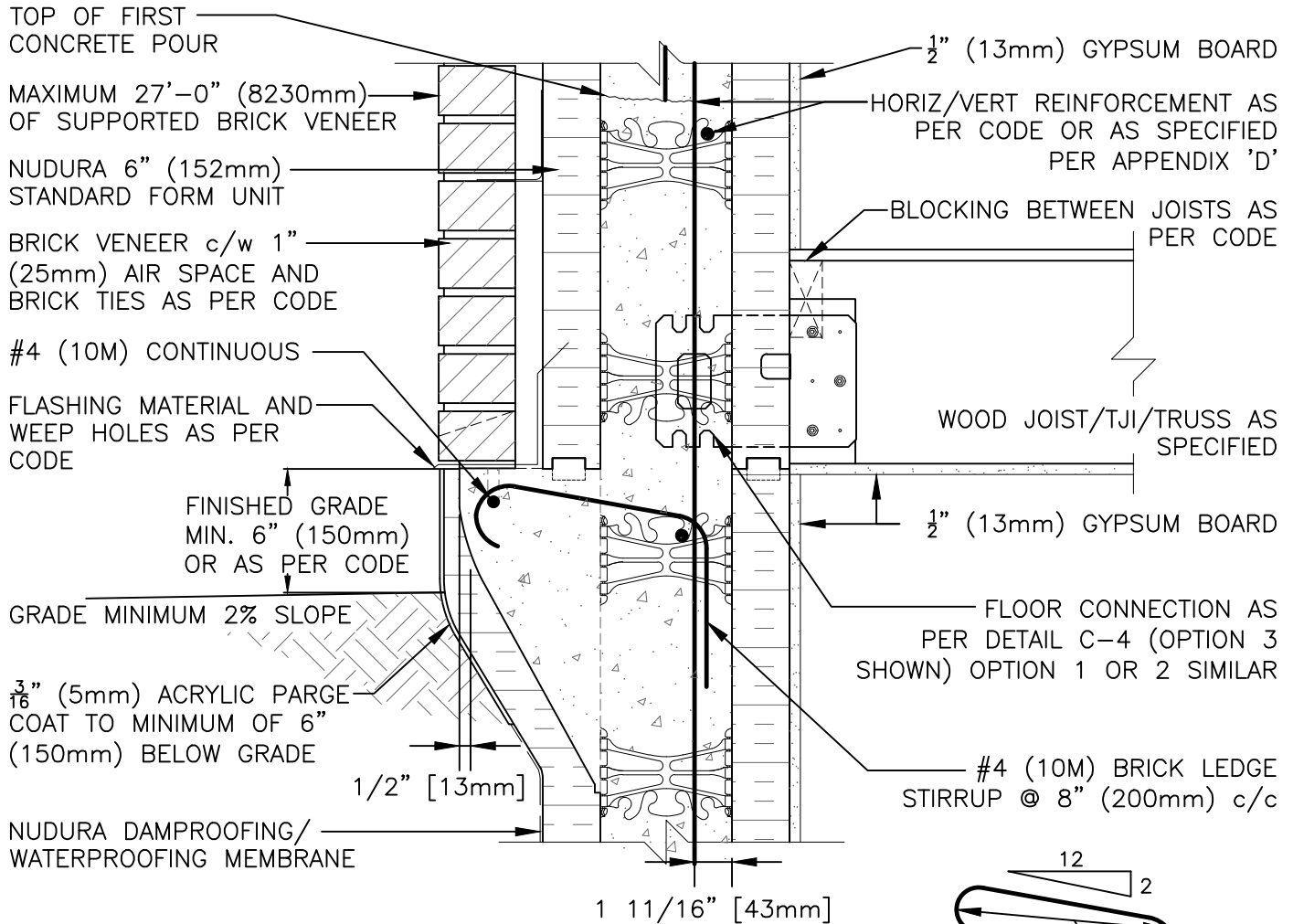


**DISCLAIMER NOTICE:**  
 SPECIFIC INFORMATION  
 REQUIRED FOR COMPLIANCE  
 WITH LOCAL CODES IS THE  
 RESPONSIBILITY OF THE  
 DESIGNER



#4 (10M) BRICK LEDGE STIRRUP FROM 20" (509mm) LENGTH OF BAR

**NOTES:**

1. MINIMUM CONCRETE COMPRESSIVE STRENGTH AT 28 DAYS 3000 PSI (20 MPa).
2. REINFORCING STEEL SHALL BE HARD GRADE DEFORMED BARS CONFORMING TO ASTM A615/A615M-05A-60,000 ksi YIELD STRENGTH (USA). (CSA G30.18-A92 (R2002) Fy=400MPa (CAN).
3. WALL REINFORCING SHALL BE IN ACCORDANCE WITH NUDURA INTEGRATED BUILDING SYSTEM, LOCAL CODE OR ENGINEERING DRAWINGS. (AS SPECIFIED)
4. BRICK UNIT WEIGHT: 41 lbs/ft<sup>2</sup> (1.9KPa) IN VERTICAL PLANE.
5. MAXIMUM WALL HEIGHT: 27 ft (8.23m) UNLESS ENGINEERED OTHERWISE.
6. ASSUME BRICK INSTALLATION IN ACCORDANCE WITH APPLICABLE CODES
7. BRICK LEDGE DETAIL ADEQUATE FOR SEISMIC AREAS S<sub>a</sub> 0.2 ≤ 1.2 (CAN) & MAXIMUM SEISMIC CATEGORY D<sub>2</sub> (USA)

*The architecture, engineering, and design of the project using the Nudura products are the responsibility of the project's design professional. All products and systems must comply with local building codes and standards. This detail is for general information and guidance only and Nudura specifically disclaims any liability for the use of this detail. The project design professional determines, in its sole discretion, whether this detail or a functionally equivalent detail is best suited for the project. This detail is subject to change without notice. Contact Nudura to ensure you have the most recent version.*

**Typical Details**

<p>Nudura Technical Support: 866-468-6299          International: +1 705-726-9499</p>	Detail: Nudura 6" (152mm) Brick Ledge at Grade Nudura 6" (152mm) Form Unit Above Grade Brick Veneer Finish		File Name:	<p><b>TREMCO</b>          Construction Products Group</p>
	Drawn by: J.N / N.L	Scale: NTS	Date: 10/29/2021	